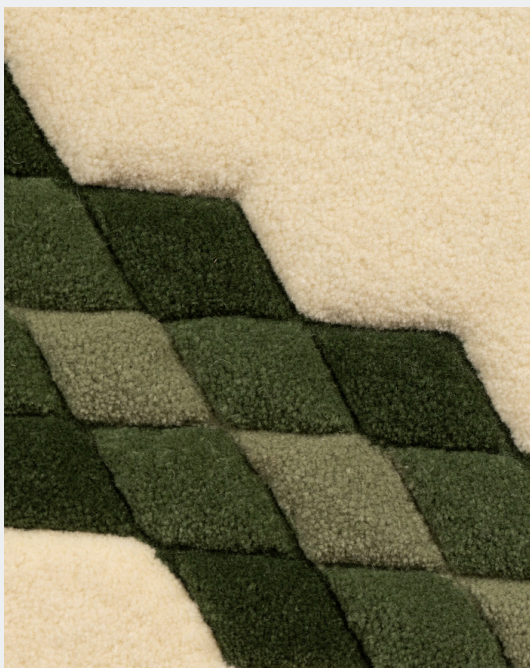
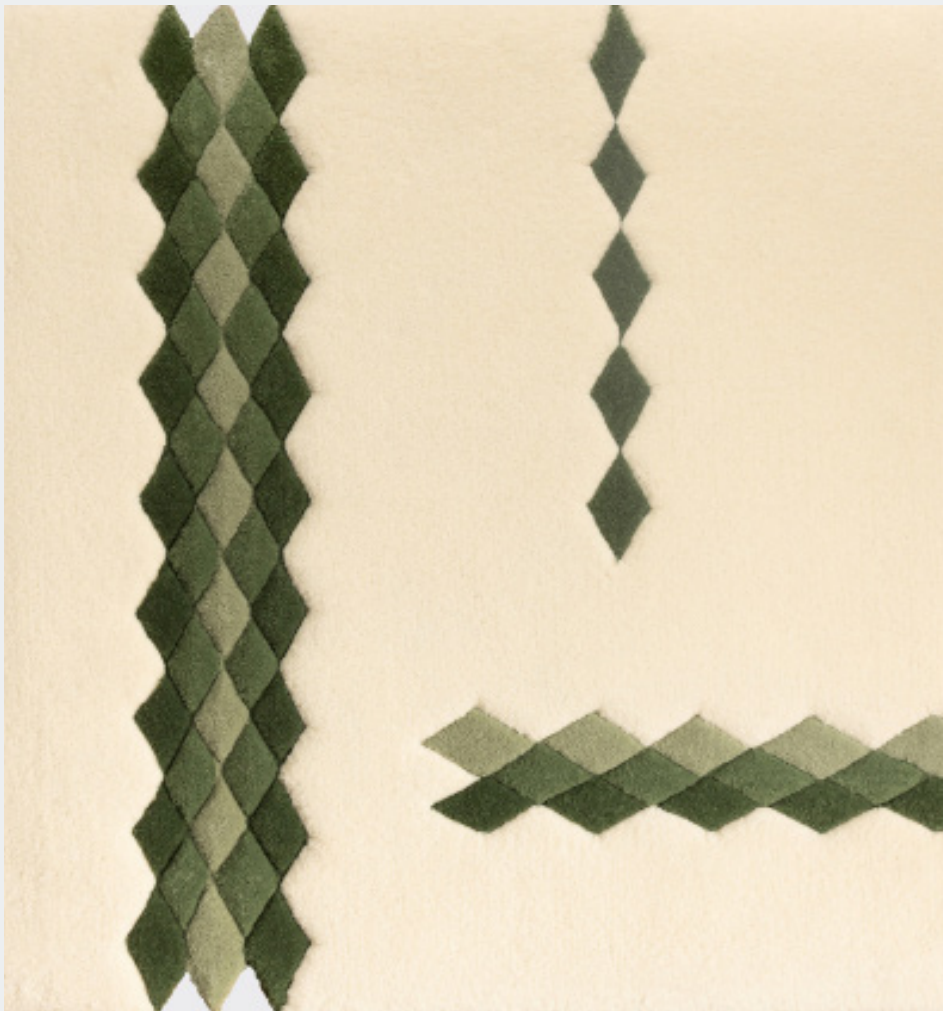


# REAL IRISH WOOL (Diamond Stitch)

BÁINÍN

TECHNICAL SPECIFICATION SHEET



## **YEAR OF DESIGN**

2022

## **DESIGNER**

Claire McGovern for Rhyme

## **METHOD**

Tufted by hand

Traditionally spun

Hand-dyed Galway wool

## **DIMENSIONS**

8 x 8ft [SMALL]

245 x 245cm

10 x 10ft [MEDIUM]

305 x 305cm

12 x 12ft [LARGE]

365 x 365cm

## **PILE**

Standard 16mm high

## **WEIGHT**

56 lbs [SMALL]

25 kg

86 lbs [MEDIUM]

39 kg

120 lbs [LARGE]

54 kg

## **MATERIALS**

Genuine Galway Wool

Non toxic or natural dyes

Natural latex binder

Natural backing (cotton/linen)

## **COUNTRY OF ORIGIN**

Ireland

## **CARE**

Professional carpet cleaning

## **FEATURES**

Sculpted Modern Green Isle Colourway

Superior acoustic absorption and allergen reduction

Color and size customization available upon request

Wall hanging hardware available upon request

Please contact us to receive a free quote